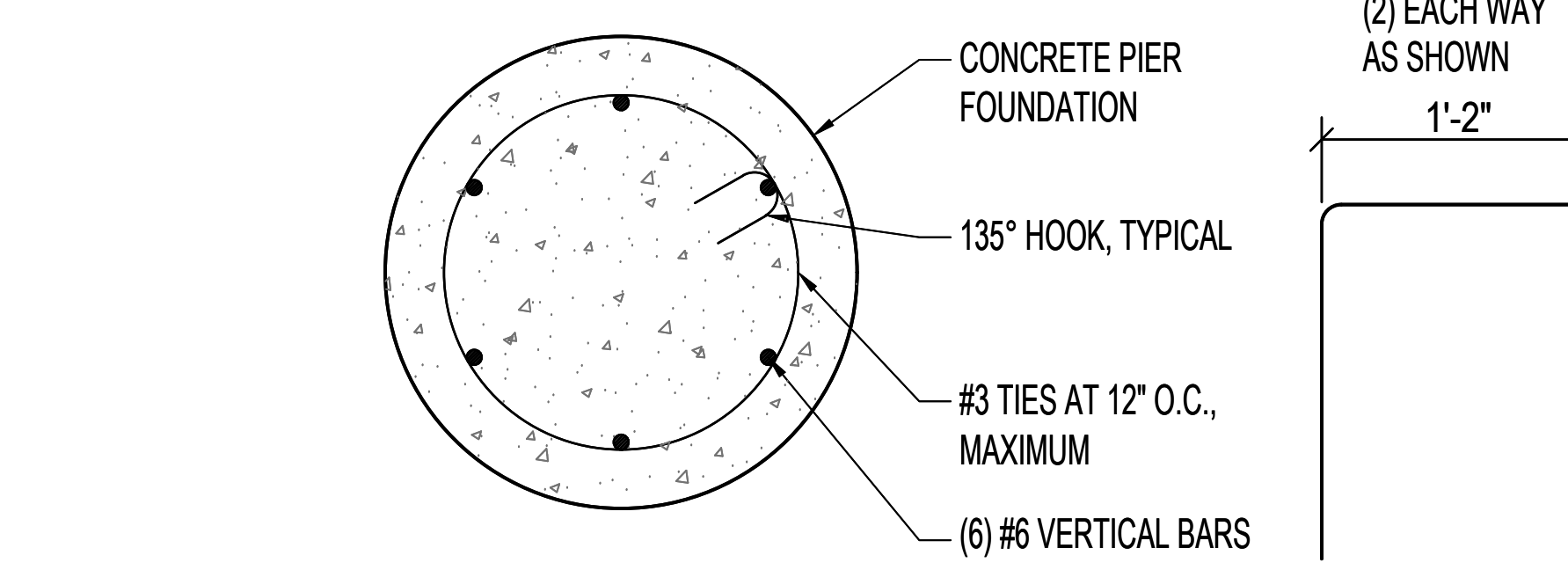
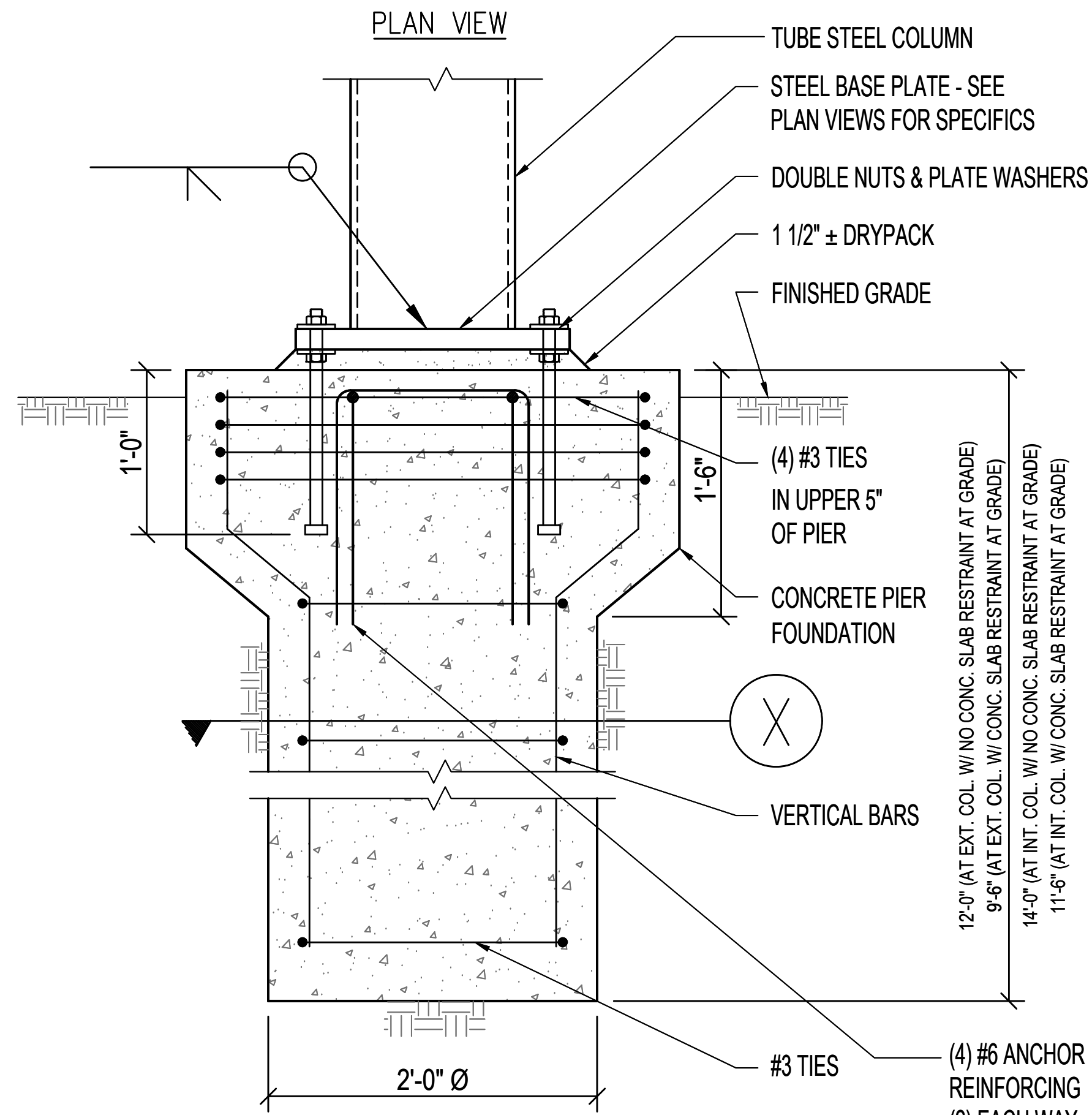
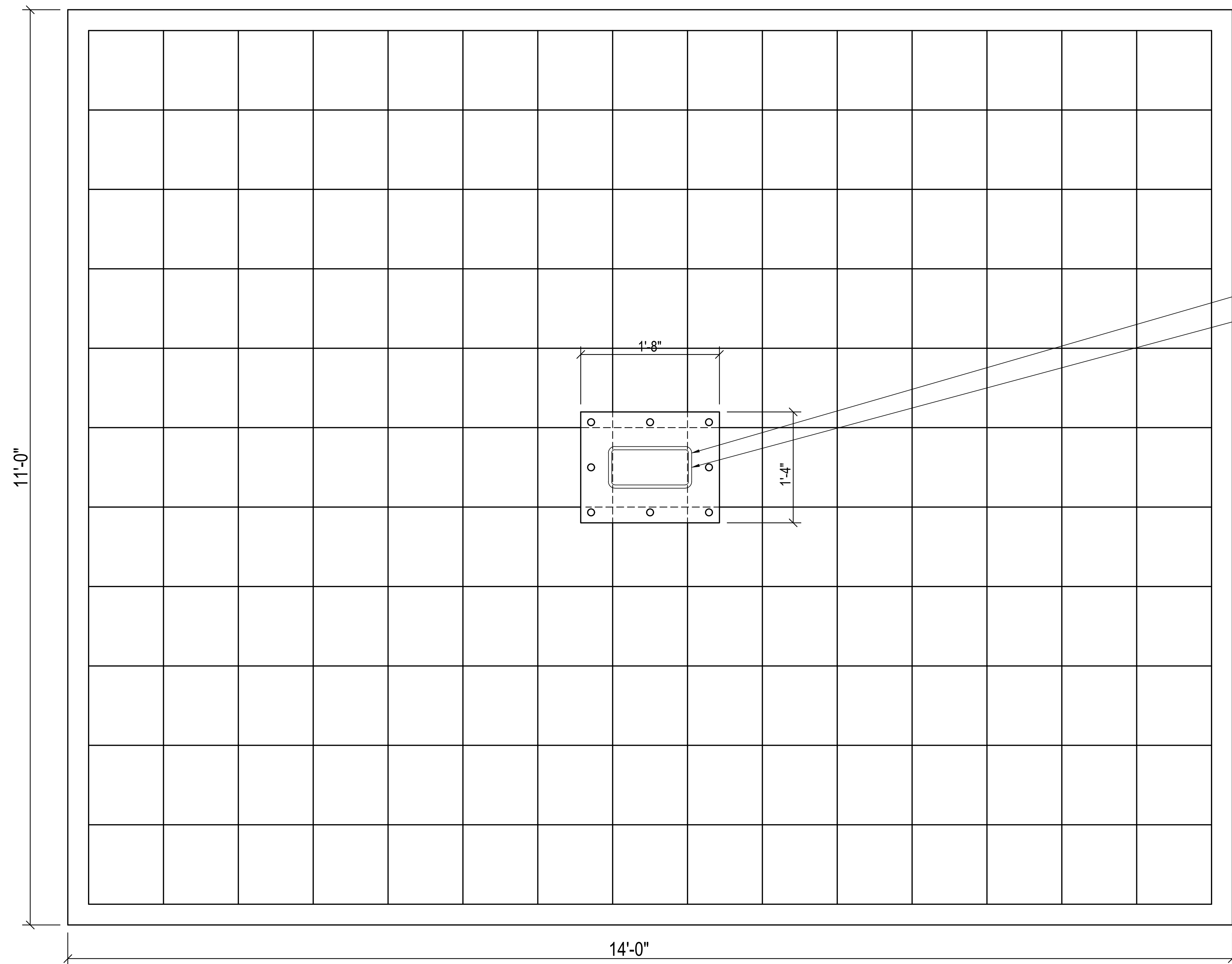


PLAN VIEW

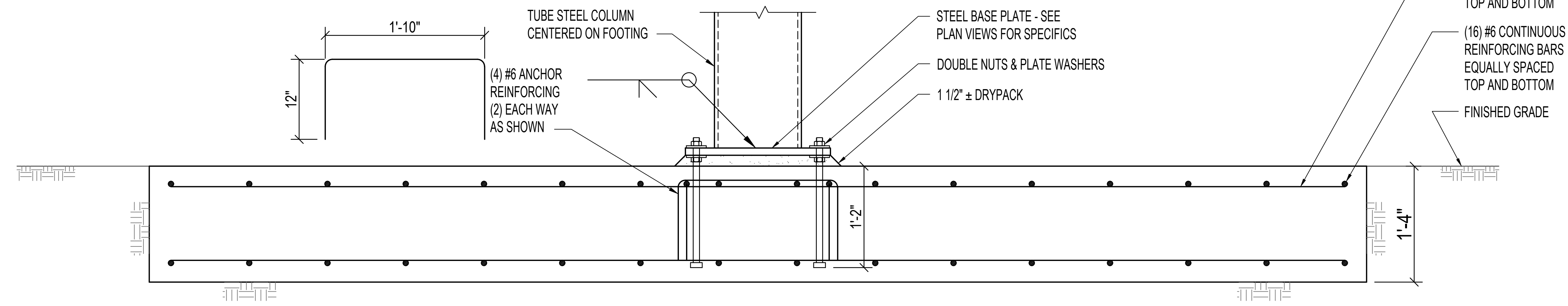


SECTION OF FOUNDATION

- 1) 7/8" THREADED RODS WITH DOUBLE PLATE WASHERS AND DOUBLE NUTS CAN BE USED IN LIEU OF (HEAVY SQUARE HEADED) ANCHOR BOLTS
- 2) 36" CONCRETE FOUNDATION CAN BE USED IN LIEU OF 24" Ø. SEE EMBEDMENT DEPTHS BELOW:
- 10'-6" (AT EXT. COL. W/ NO CONC. SLAB RESTRAINT AT GRADE)
 - 8'-6" (AT EXT. COL. W/ CONC. SLAB RESTRAINT AT GRADE)
 - 12'-6" (AT INT. COL. W/ NO CONC. SLAB RESTRAINT AT GRADE)
 - 10'-0" (AT INT. COL. W/ CONC. SLAB RESTRAINT AT GRADE)
- REINFORCING STEEL REQUIREMENTS FOR 36" Ø:
- (8) #6 VERTICAL BARS (IN LIEU OF 6)
 - #3 TIES ARE REQUIRED TO BE SPACED AT 12" O.C. MAX.



STEEL COLUMN - TYPICAL
 1 1/2" X 16" X 1'-8" STEEL
 BASE PLATE WITH (8) 1"Ø
 (HEAVY SQUARE HEADED)
 ANCHOR BOLTS - TYPICAL.
 SEE GENERAL STRUCTURAL
 NOTES FOR ANCHOR GRADE



RECTANGULAR CONCRETE FOOTING OPTION (INTERIOR)

ALT

PE STAMP

GENERAL INFORMATION
AND SYSTEM DETAILS

GENERAL INFORMATION:
 SITE ADDRESS:
 AZIMUTH:
 SYSTEM TYPE:
 TOTAL SYSTEM SIZE:
 TOTAL # OF MODULES:
 MODULE TILT:
 N-S SPACING:
 E-W GAP BETWEEN MOD.:
 E-W GAP BETWEEN ARRAYS:
 BUILDING CODES:
 STRUCTURAL:
 EMBEDMENT:
 SOIL CLASS:
 LOADS:
 DESIGN WIND SPEED:
 3 SEC GUST EFFECT:
 RISK CATEGORY:
 EXPOSURE:
 MWFRS WIND LOAD (NORTH WIND):
 PSF
 MWFRS WIND LOAD (SOUTH WIND):
 PSF
 DESIGN SNOW LOAD: PSF
 MODULE DEAD LOAD: PSF
 MANUFACTURER'S TOLERANCES:
 LATERAL POST PLACEMENT
 (X-Z PLANE):
 ±2.0" FOR TILT ANGLES < 20°
 ±1.5" FOR TILT ANGLES ≥ 20°
 LATERAL POST PLACEMENT
 (Y-Z PLANE): ±4.0" WITHIN ARRAY
 POST HEIGHT VARIATION
 (X-Y PLANE): ±0.5"
 POST VERTICALITY TOLERANCE:
 < 2.0° ALL DIRECTIONS
 POST ROTATIONAL TOLERANCE:
 ±5.0°
 ARRAY TILT ANGULAR TOLERANCE:
 ±2.0°

MODULE INFORMATION

MODULE:
 MODULE MODEL:
 MODULE SIZE:
 MODULE WEIGHT:
 MODULE OUTPUT:
 THIS DRAWING IS THE PROPERTY OF DPM
 DIRECT POWER & WATER CORPORATION AND CANNOT BE USED, COPIED, OR DISCLOSED WITHOUT
 P E R M I S S I O N
 DISCLAIMER OF LIABILITY
 UNDER THE CONDITIONS OF USE AND MAINTENANCE OF THE UNIT ARE BEYOND THE CONTROL OF
 DIRECT POWER & WATER CORPORATION, THE COMPANY DOES NOT ASSUME RESPONSIBILITY AND
 LIABILITY FOR LOSS, DAMAGE, OR EXPENSE ARISING
 OUT OF OR IN ANY WAY CONNECTED WITH THE
 USE, OR MAINTENANCE OF THIS SYSTEM.
 PLEASE NOTE
 IF PLAN VIEW WAS DERIVED BY HAND SCALING A PRINT IMAGE
 THE RESULTING ACCURACY CANNOT BE GUARANTEED.
 CUSTOMER ASSUMES ALL RESPONSIBILITY IN VERIFYING
 DESIGN TO ACTUAL CONSTRUCTION CONDITIONS.

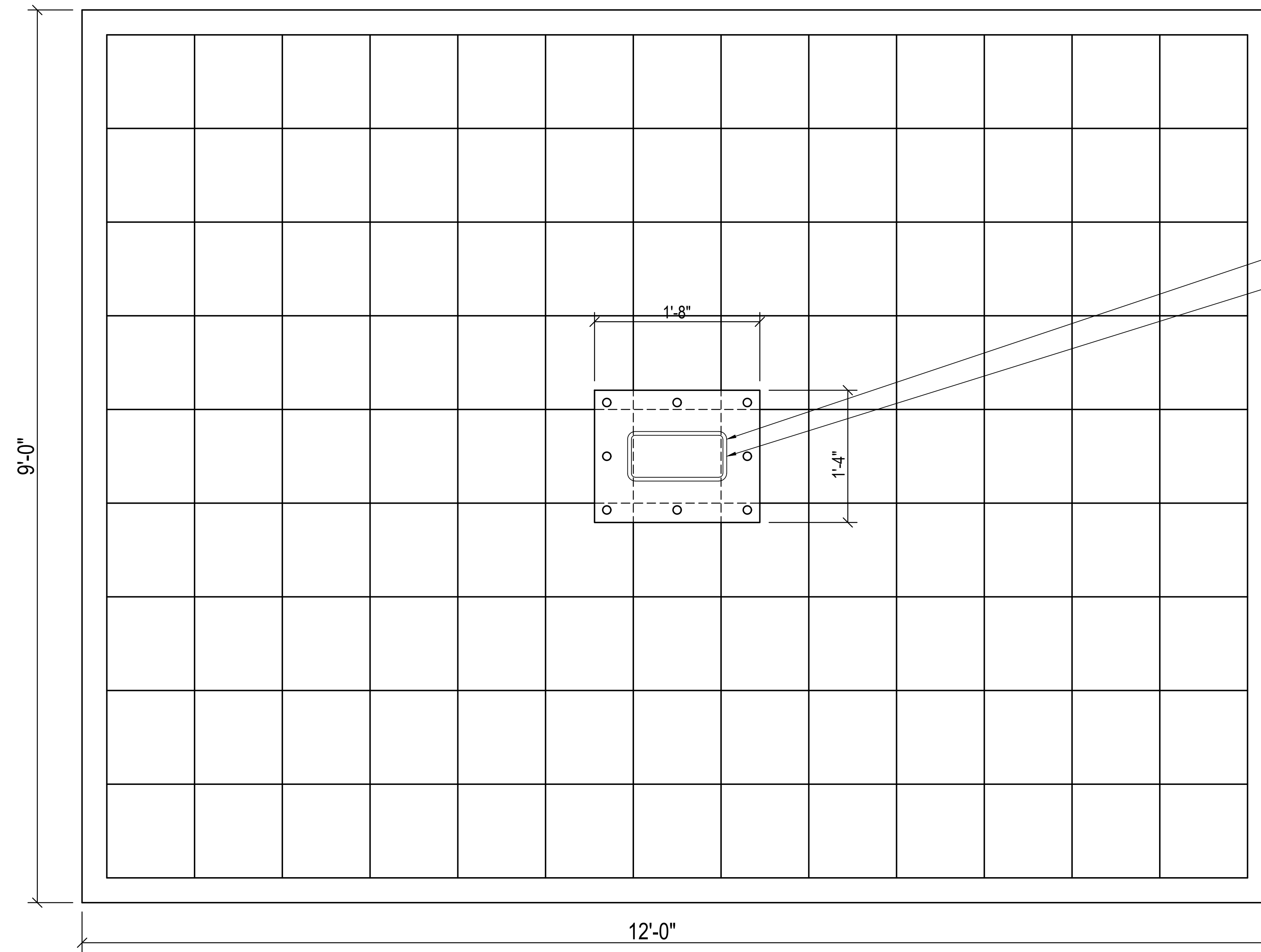
REVISION TABLE

REV.	BY	APP BY	DATE

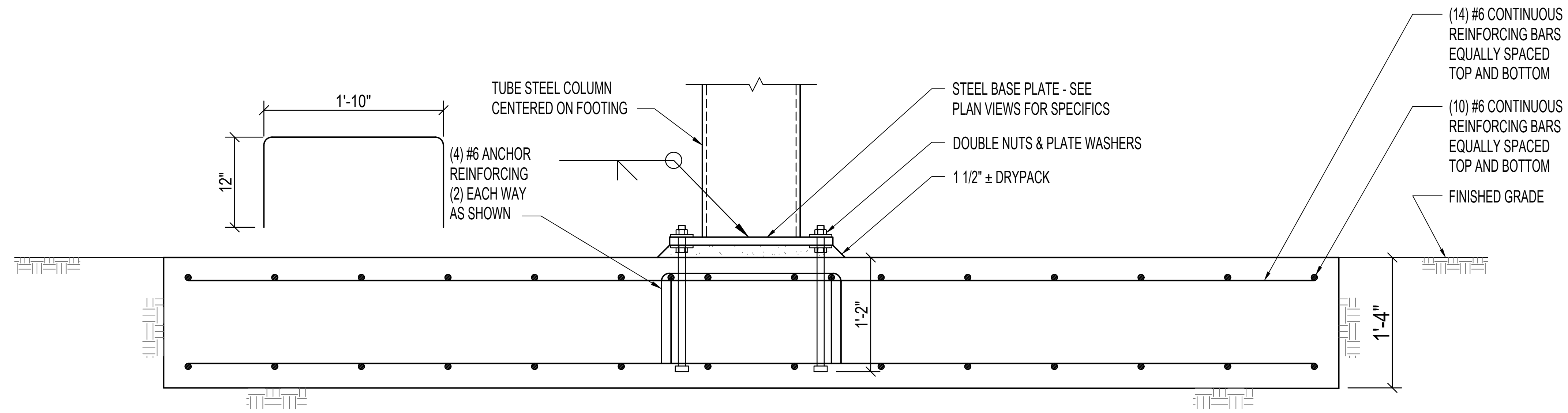
PREFORMED LINE PRODUCTS
 CLEVELAND, OH
 1-(216)-473-5200

CUSTOMER:
 PROJECT:

TITLE: ALTERNATE FOUNDATION			
REVISION:	DATE:	DRAWN BY:	
SHEET SIZE:	D-SIZE	ENGINEER/REVIEW: ADAM M.	
SCALE:	VARIES	SHEET: 4	OF: 5



STEEL COLUMN - TYPICAL
 1 1/2" X 16" X 1'-8" STEEL
 BASE PLATE WITH (8) 1"Ø
 (HEAVY SQUARE HEADED)
 ANCHOR BOLTS - TYPICAL.
 SEE GENERAL STRUCTURAL
 NOTES FOR ANCHOR GRADE



RECTANGULAR CONCRETE FOOTING OPTION (EXTERIOR)

ALT

PE STAMP

GENERAL INFORMATION AND SYSTEM DETAILS

GENERAL INFORMATION:
 SITE ADDRESS:
 AZIMUTH:
 SYSTEM TYPE:
 TOTAL SYSTEM SIZE:
 TOTAL # OF MODULES:
 MODULE TILT:
 N-S SPACING:
 E-W GAP BETWEEN MOD.:
 E-W GAP BETWEEN ARRAYS:
 BUILDING CODES:
 STRUCTURAL:
 EMBEDMENT:
 SOIL CLASS:
 LOADS:
 DESIGN WIND SPEED:
 3 SEC GUST EFFECT:
 RISK CATEGORY:
 EXPOSURE:
 MWFRS WIND LOAD (SOUTH WIND):
 PSF
 MWFRS WIND LOAD (NORTH WIND):
 PSF
 DESIGN SNOW LOAD: PSF
 MODULE DEAD LOAD: PSF
 MANUFACTURER'S TOLERANCES:
 LATERAL POST PLACEMENT (X-Z PLANE):
 ±2.0" FOR TILT ANGLES < 20°
 ±1.5" FOR TILT ANGLES ≥ 20°
 LATERAL POST PLACEMENT (Y-Z PLANE): ±4.0" WITHIN ARRAY
 POST HEIGHT VARIATION (X-Y PLANE): ±0.5"
 POST VERTICALITY TOLERANCE:
 < 2.0° ALL DIRECTIONS
 POST ROTATIONAL TOLERANCE:
 ±5.0°
 ARRAY TILT ANGULAR TOLERANCE:
 ±2.0°

MODULE INFORMATION

MODULE:
 MODULE MODEL:
 MODULE SIZE:
 MODULE WEIGHT:
 MODULE OUTPUT:
 THIS DRAWING IS THE PROPERTY OF DPM DIRECT POWER & WATER CORPORATION AND CANNOT BE LOANED, COPIED, OR DISCLOSED WITHOUT PERMISSION.
 DISCLAIMER OF LIABILITY: UNDER THE CONDITIONS OF USE AND MAINTENANCE OF THE UNIT ARE BEYOND THE CONTROL OF DIRECT POWER & WATER CORPORATION, THE COMPANY DOES NOT ASSUME RESPONSIBILITY AND LIABILITY FOR LOSS, DAMAGE, OR EXPENSE ARISING OUT OF OR IN ANY WAY CONNECTED WITH THE USE, OR MAINTENANCE OF THIS SYSTEM.
 PLEASE NOTE: IF PLAN VIEW WAS DERIVED BY HAND SCALING A PRINT IMAGE THE RESULTING ACCURACY CANNOT BE GUARANTEED. CUSTOMER ASSUMES ALL RESPONSIBILITY IN VERIFYING DESIGN TO ACTUAL CONSTRUCTION CONDITIONS.

REVISION TABLE

REV.	BY	APP BY	DATE

PREFORMED LINE PRODUCTS
 CLEVELAND, OH
 1-(216)-473-5200

CUSTOMER:
 PROJECT:

TITLE: ALTERNATE FOUNDATION			
REVISION:	DATE:	DRAWN BY:	
SHEET SIZE: D-SIZE	ENGINEER REVIEW: ADAM M.		
SCALE: VARIES	SHEET: 5	OF: 5	